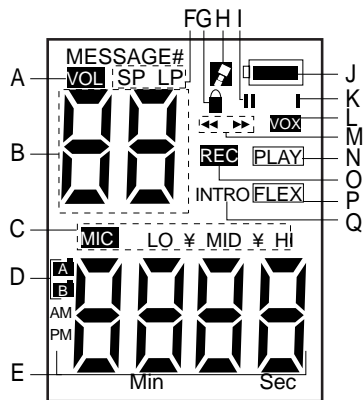


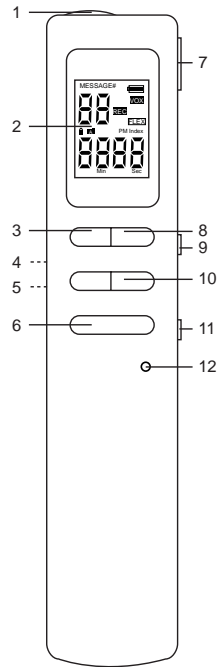
LOCATION OF CONTROLS



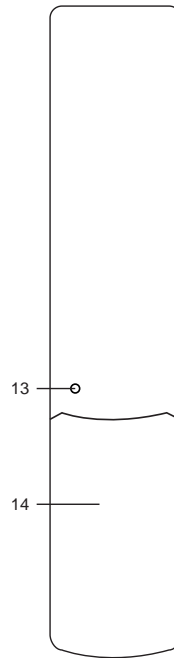
- | | |
|-------------------------------|----------------------|
| A. VOLUME Indicator | J. Battery Indicator |
| B. Message Number | K. Index Indicator |
| C. MIC Sensitivity Indicators | L. VOX Indicator |
| D. Folder A/B Indicator | M. Rew/Fwd Indicator |
| E. Time Indicator | N. PLAY Indicator |
| F. Speed Indicators | O. RECORD Indicator |
| G. Message Lock Indicator | P. FLEX Indicator |
| H. Erase Indicator | Q. INTRO Indicator |
| I. Pause Indicator | |

LOCATION OF CONTROLS

FRONT



REAR

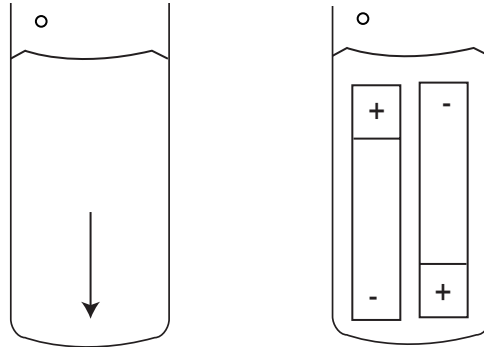


- | | |
|------------------------------|-------------------------|
| 1. Microphone | 8. INDEX Button |
| 2. Display | 9. BACK LIGHT Button |
| 3. MODE Button | 10. REW/FWD Buttons |
| 4. MIC Jack (Side of Unit) | 11. HOLD Switch |
| 5. PHONE Jack (Side of Unit) | 12. ERASE Button |
| 6. PLAY/PAUSE Button | 13. RESET Button |
| 7. REC/STOP Button | 14. Battery Compartment |


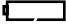
POWER SOURCE

BATTERY INSTALLATION

Open the battery compartment by sliding it out. Insert two (2) "AAA" size batteries (not included) following the polarity diagram. Put the battery compartment cover back into place.



BATTERY INDICATORS:

-  : When the batteries are fresh, this will appear.
-  : When the batteries are weak or dead, this will blink.

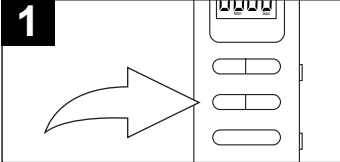
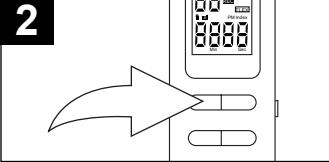
BATTERY PRECAUTIONS

Follow these precautions when using batteries in this device:

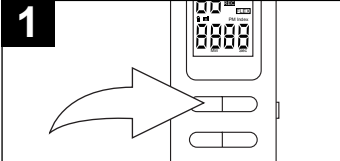
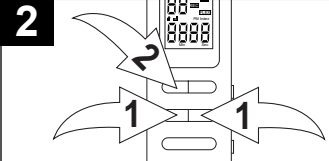
1. Use only the size and type of batteries specified.
2. Be sure to follow the correct polarity when installing the batteries as indicated in the battery compartment. Reversed batteries may cause damage to the device.
3. Do not mix different types of batteries together (e.g. Alkaline and Carbon-zinc) or old batteries with fresh ones.
4. If the device is not to be used for a long period of time, remove the batteries to prevent damage or injury from possible battery leakage.
5. Do not try to recharge batteries not intended to be recharged; they can overheat and rupture. (Follow battery manufacturer's directions.)

OPERATION

TO TURN THE UNIT ON AND OFF

	
<p>1</p> <p>To turn the unit on, press any of the buttons.</p>	<p>2</p> <p>To turn the unit off, press and hold the MODE button until IDLE blinks in the display. The unit will automatically power off if you do not touch any button for one minute.</p>

TO SET THE TIME

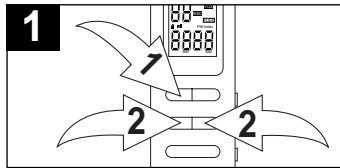
	
<p>1</p> <p>Turn the unit on as shown above. Press the MODE button seven times; the hours will blink.</p>	<p>2</p> <p>Press the REW or FWD button 1 to decrease/increase the hours, then press the MODE button 2; the minutes will blink. Press the REW or FWD button 1 to decrease/increase the minutes, then press the MODE button 2 and the time will be set.</p>

TO QUIT TIME SETTING: While setting the time, if the REC/STOP button is pressed or no button is pressed within 5 seconds, the unit will revert to the Standby mode.

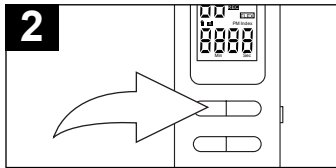
OPERATION (CONTINUED)

RECORDING QUALITY

You can choose between two voice recording quality modes. For best sound quality, select SP (Standard Play). For longer recording time (reasonable sound quality), select LP (Long Play).

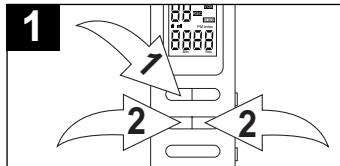


Turn the unit on as shown on page 4. Press the MODE button ❶ four times; the speed will blink. Press the REW or FWD button ❷ to select either SP or LP as desired.

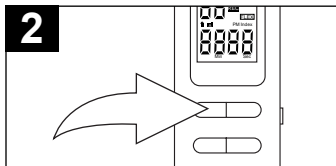


When the desired speed appears, press the MODE button five times or do not press a button for five seconds to go back to the Standby mode. Long Play will allow a total of 60 minutes of recording time. Standard Play will allow a total of 40 minutes of recording time.

RECORDING SENSITIVITY



Turn the unit on as shown on page 4. Press the MODE button ❶ three times; the Mic Sensitivity indicators will blink. Press the REW/FWD button ❷ to select LO, MID or HI as desired. Select HIGH if recording sounds that are further away.

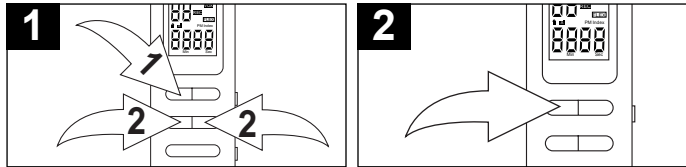


When the desired sensitivity appears, press the MODE button six times or do not press a button for five seconds to go back to the Standby mode.

OPERATION (CONTINUED)

SELECTING A FILE FOLDER

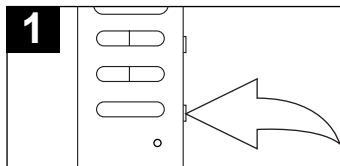
This unit has two memory storage areas (file folders) to choose from, labelled A and B. You can store a total of 128 messages. To select a file folder, proceed as follows:



Turn the unit on as shown on page 4. Press the MODE button ❶ five times; the Folder A/B indicator will blink. Press the REW or FWD button ❷ to select either file folder A or B as desired.

When the desired file folder appears, press the MODE button four times or do not press a button for five seconds to go back to the Standby mode.

HOLD SWITCH

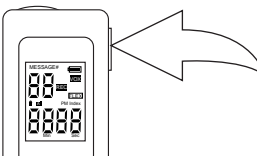
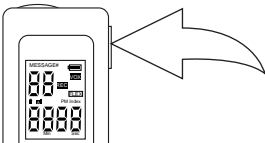
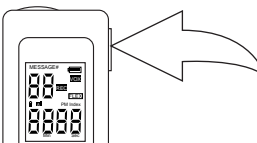


Slide the HOLD switch until "HOLD" blinks in the display to disable the buttons. Slide the HOLD switch to the OFF position to enable the buttons again.

OPERATION (CONTINUED)

NORMAL RECORDING

This unit is capable of recording only when sound is heard (VOX). To use this feature, see the next page. For normal recording, follow the steps below.

1 See pages 4 through 6.	2 
Turn the unit on, select the desired sound quality and select a file folder as previously described.	Press the REC/STOP button; the REC indicator will blink and the elapsed time will appear.
3 	4 
Speak into the built-in microphone or insert a microphone into the MIC jack and speak into it in a normal tone of voice. Press the REC/STOP button again to stop recording.	To pause recording, press and hold the REC/STOP button for more than three seconds; the Pause indicator will light in the display. To release pause, press the REC/STOP button again.

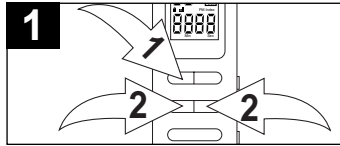
NOTES:

- The built-in audio level automatically sets the recording level.
- To record another message, simply repeat steps 2 and 3, the message number will increase by one.
- For normal voice levels, a distance of five to nine inches is appropriate.
- If the memory is full, "FULL" will appear in the display and the REC/STOP button will be disabled.

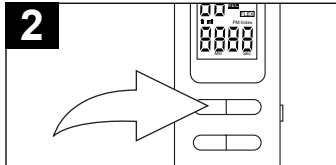
OPERATION (CONTINUED)

VOICE ACTIVATED (VOX) RECORDING

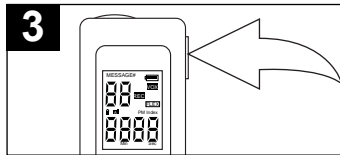
Voice activated recording will allow dictation only when you speak. When the unit detects a pause of a few seconds, it will temporarily stop recording until it detects sound again.



1 Turn the unit on as shown on page 4. Press the MODE button **1** once; the VOX indicator will blink. Press the REW or FWD button **2** to turn the VOX on; the VOX indicator will appear.



2 Press the MODE button eight times or do not press a button for five seconds to go back to the Standby mode.



3 Press the REC/STOP button and the REC indicator will light and the elapsed time will appear. Speak into the built-in microphone or insert a microphone into the MIC jack and when the unit picks up sound, it will record. Press the REC/STOP button again to stop recording. Repeat step 1 again to turn this feature off.

NOTES:

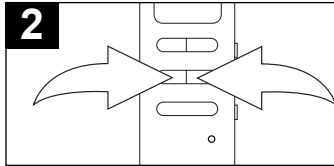
- The first few sounds activate the recorder and may not be recorded.
- A variation in voice level during recording will not stop the unit, two seconds of silence is required to stop the recording.
- For constant recording, see previous page.
- The built-in audio level automatically sets the recording level.
- For normal voice levels, a distance of five to nine inches is appropriate.

OPERATION (CONTINUED)

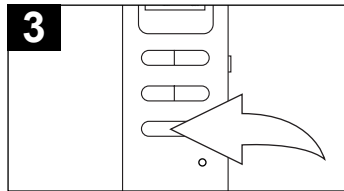
TO PLAY BACK MESSAGES

1 See pages 4 through 6.

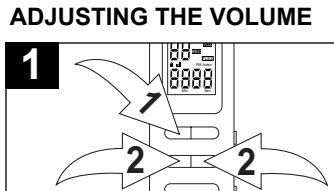
Turn the unit on, select the desired sound quality and select a file folder as previously described.



Select the desired message number by pressing the REW or FWD button; the message number and the message length will appear in the display.



Press the PLAY/PAUSE button; the unit will play the currently selected message, then stop. During playback, the Play indicator and the elapsed time of the message will appear in the display.



To adjust the volume, while playing a message, press the MODE button ①, followed by the REW or FWD button ② to raise/lower the volume; the display will show the level (L0 to L7).

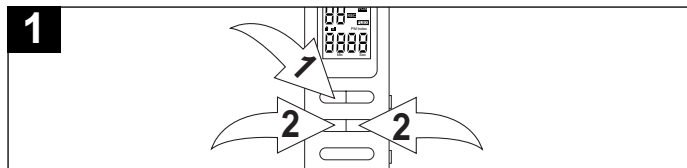
NOTES:

- To pause, press the PLAY/PAUSE button; the Pause indicator will appear in the display. To release pause, press the PLAY/PAUSE button again.
- To skip or go back to previous messages, simply press and release the desired REW/FWD button until the desired message number is reached.
- To stop playback, press the REC/STOP button.
- PHONE JACK: For private listening, insert a earphone into this jack.

OPERATION (CONTINUED)

FLEX SPEECH PLAYBACK

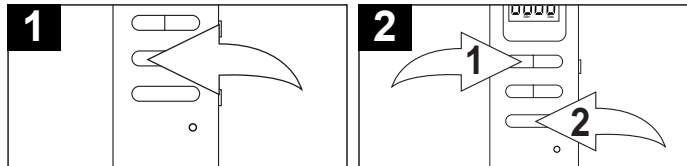
Flex Speech will allow you to quickly listen to a message. Turn this feature on as follows:



While playing a message, press the MODE button **1** three times, followed by the REW or FWD button **2** to turn this feature on; "FLEX" will appear in the display. The playback will then be faster, enabling you to listen to a message much quicker. Repeat this step to turn this feature off.

INTRO PLAYBACK

This unit can play back the first five seconds of each recorded message, which is useful when trying to locate a particular recording.



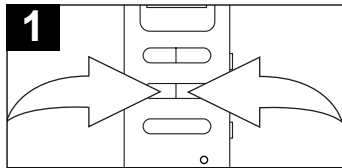
Use the REW button to decrease the message number to 1.

Press the MODE button **1** twice; the INTRO indicator will blink in the display. Press the PLAY/PAUSE button **2** to start INTRO playback. The unit will then play the first five seconds of each message.

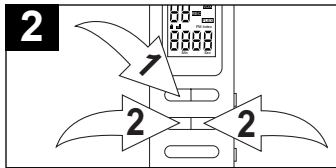
OPERATION (CONTINUED)

LOCKING AND UNLOCKING A MESSAGE

A message can be locked (or unlocked) so it is not accidentally erased.



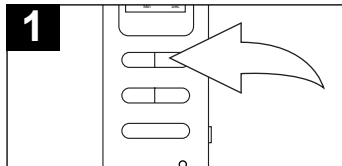
1 Use the REW or FWD button to select a message to lock.



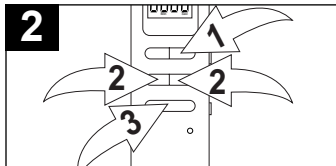
2 Press the MODE button **1** six times; the Lock indicator will blink in the display. Press the REW or FWD button **2** to lock (ON) or unlock (OFF) the message.

INDEX

Index is used to set the Index Marker or remove the Index Marker within a message. Set up to 128 Index Markers as follows:



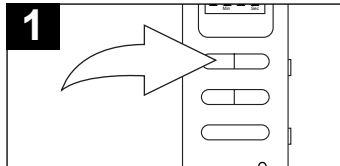
1 **TO RECORD:**
While playing a message, press the INDEX button to set an index; the Index indicator will blink twice if it was set correctly.



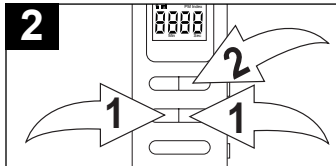
2 **TO RETRIEVE:**
While in the Standby mode, press the INDEX button **1** and the Index indicator and the Index marker number will appear. Press the REW or FWD button **2** to select an index, followed by the PLAY/ PAUSE button **3**; the unit will then play the message from the index marker.

OPERATION (CONTINUED)

DELETING AN INDEX

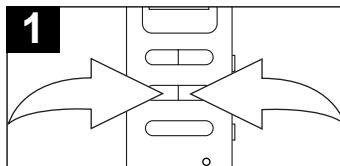


1 While playing a message, press the MODE button twice; the Index indicator will blink.

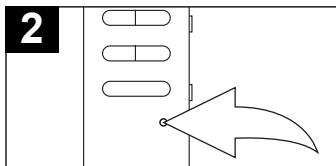


2 Press the REW or FWD button ❶ to go to the previous/next Index Marker. Press the INDEX button ❷ to delete the current Index marker.

ERASING A SINGLE MESSAGE



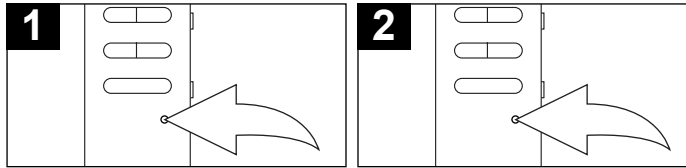
1 While in the Standby mode, press the REW or FWD button to select a message to be deleted.



2 Press the ERASE button; the Erase indicator will blink in the display. To erase, press the ERASE button again within the next five seconds.

OPERATION (CONTINUED)

ERASING ALL MESSAGES IN THE TWO FILE FOLDERS



While in the Standby mode, press and hold the ERASE button for more than three seconds; the Erase indicator and "ALL" will blink in the display.

Press the ERASE button once more to erase all of the messages. Erasing all messages could take up to 90 seconds. While erasing, no other buttons can be pressed until the display returns and erasing has completed.

IMPORTANT NOTES:

- Once message(s) are deleted, they cannot be recovered.
- When the memory is full, "FULL" will appear in the display.
- To exit the Delete mode, press any button, except for the ERASE button.

TO ILLUMINATE THE BACK LIGHT:

Press the BACK LIGHT button and the LCD display will be illuminated for three seconds.

CARE AND MAINTENANCE

RESETTING THE UNIT

If the unit is exposed to a strong static electrical charge, the unit may lock up, or the display may dim. This is very rare, but if it does happen, remove the batteries and then reinstall. All settings will return to their preset values, but the previous messages are saved.

TRAFFIC SAFETY

- Do not use while operating a motorized vehicle. It may create a traffic hazard and is illegal in many areas.
- Even if your earphone is an open air type designed to let you hear outside sounds, do not turn the volume up so high that you cannot hear what is around you.
- Use extreme caution or temporarily discontinue use in potentially hazardous situations.

CARE

- Keep the unit dry. If it gets wet, wipe it immediately. Liquids may contain minerals that can corrode the circuits.
- Use and store the unit only in normal temperature environments. Extreme temperatures can shorten the life of electronic devices, damage batteries and/or melt plastic parts.
- Keep the unit away from dirt and dust.
- Handle the unit gently and carefully. Dropping it can cause damage and may cause the unit to work improperly.
- To clean, wipe the unit with a damp cloth occasionally to keep it looking new. Do not use harsh chemicals, cleaning solvents or strong detergents.

SPECIFICATIONS

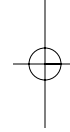
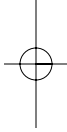
Recording System Built-in Flash Memory
Recording Time 60 Min. (LP), 40 Min (SP)
Power Source 3V, "AAA" size x 2 batteries (Not Included)
Dimensions 5.5 (H) x 1.1 (W) x .75 (D) inches

Specifications are subject to change without notice.

**FOR ADDITIONAL SET-UP OR OPERATING
ASSISTANCE, PLEASE VISIT OUR WEBSITE AT
WWW.MEMCORPINC.COM OR CONTACT
CUSTOMER SERVICE AT
1-800-919-3647**

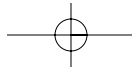
**PLEASE KEEP ALL PACKAGING MATERIAL FOR
AT LEAST 90 DAYS IN CASE YOU NEED TO
RETURN THIS PRODUCT TO YOUR PLACE OF
PURCHASE OR MEMOREX.**

**FOR PARTS AND ACCESSORIES, CONTACT
FOX INT'L AT 1-800-321-6993.**



Memcorp, Inc.
Weston, FL
Printed in Hong Kong

Visit our website at www.memcorpinc.com

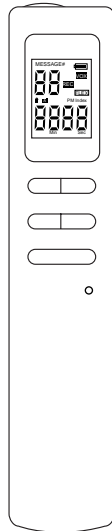


Memorex[®]

DIGITAL VOICE RECORDER (DVR)

MODEL: MB0035

**BEFORE OPERATING THIS PRODUCT,
PLEASE READ THESE INSTRUCTIONS COMPLETELY.**



OPERATING INSTRUCTIONS